



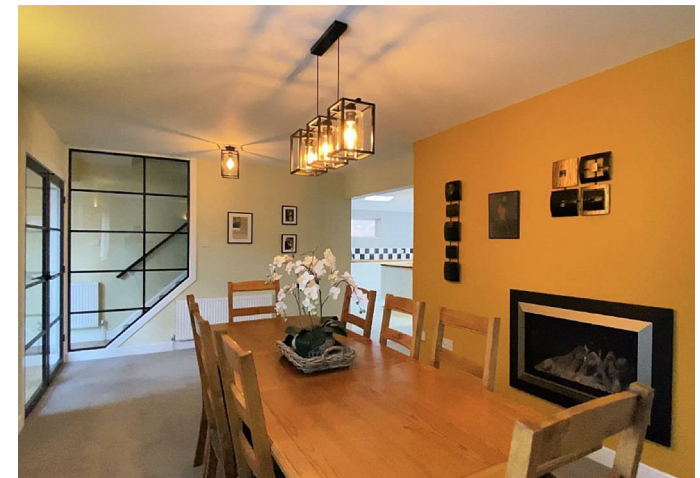
Park Hill, Gaddesby
Leicester, Leicestershire, LE7 4WH



Park Hill, Gaddesby Leicester, Leicestershire, LE7 4WH £700,000

Totally transformed, from a tired home to a fabulous contemporary abode, Castledene is a detached home situated within arguably one of Melton's most desirable villages with open views over neighbouring fields. Benefiting from an upgraded gas central heating system, re-fitted working alarm and replaced double glazed windows, the layout includes an entrance hall, dining room open with the lounge and the contemporary breakfast kitchen with integrated appliances, solid oak surfaces and under floor heating. There is also a utility room, downstairs shower room and a study/playroom/fifth bedroom. Upstairs you will find four bedrooms (bedroom one with a Juliette balcony, walk through wardrobe and access to it's own en-suite shower room) and a contemporary styled bathroom. Set behind electric gates, the plot offers a landscaped driveway giving access to an integral double garage providing parking for multiple vehicles, with front and rear lawned gardens. An early viewing is highly recommended.

Energy Efficiency Rating		Environmental Impact (CO ₂) Rating			
	Current	Potential			
Very energy efficient - lower running costs			Very environmentally friendly - lower CO ₂ emissions		
A			A		
105-121			105-121		
B			B		
81-104			81-104		
C			C		
69-80			69-80		
D			D		
55-68			55-68		
E			E		
41-54			41-54		
F			F		
29-40			29-40		
G			G		
13-28			13-28		
Not energy efficient - higher running costs			Not environmentally friendly - higher CO ₂ emissions		
England & Wales	EU Directive 2002/91/EC	76	81	England & Wales	EU Directive 2002/91/EC



Accommodation

A front entrance door opens into the:

Entrance Hall

Presented with classic enhanced oak flooring, the entrance hall features full height dual aspect glazing with integral fitted blinds, a vaulted ceiling with pendent lighting, two central heating radiators, alarm panel and a staircase rising to the first floor with feature glazing into the dining room.

Formal Dining Room

12'0" x 20'4" (3.68m x 6.22m)

Perfect for formal dining occasions and positioned around a feature inset gas fireplace, the dining area is presented with carpet flooring and offers two central heating radiators, two wall lights, TV point and a window overlooking the front elevation with a fitted made to measure blind. Open access leads through to the lounge and breakfast kitchen.

Lounge

24'0" x 17'4" (7.34m x 5.29m)

Featuring bi-fold doors which open to provide access to the larger than normal lawned rear garden, the living area is presented with carpet flooring and offers partial under floor heating, central heating radiator, TV point and spotlighting. Open access leads around to the:

Enlarged Breakfast Kitchen

24'10" x 14'7" (7.58m x 4.45m)

A particular selling feature of the accommodation is the contemporary kitchen featuring characterful vaulted ceilings and fitted with a range of wall mounted and base units with complementary solid oak surfaces over, tiled splashbacks and soft closing drawers. Features include a built in 'Hotpoint' oven and microwave, 'Schott & Ceran' five disk induction hob with a 'Schott & Ceran' hidden electric hood, inset sink and drainer with a flexi hose tap and an integrated dishwasher, full height fridge and full height freezer. Enjoying the use of a breakfast island with two pull up sockets, there is under floor heating, spotlighting, two velux windows, television points, two side elevation windows and a useful pantry with shelving and a battery light. Bi-folding doors open to provide further access to the larger than average rear garden. A sliding door leads to the:

Utility Room

7'7" x 4'5" (2.33m x 1.36m)

Providing further storage and space for appliances, with a window to the side elevation, velux window, spotlighting and a Worcester Greenstar boiler. Sliding doors provide access to both the study and downstairs shower room.

Downstairs Shower Room

7'2" x 3'6" (2.20m x 1.09m)

Fitted with a three piece suite comprising an electric shower, wash hand basin with storage beneath and a wc, with complementary tiling, light up mirror, extraction fan and a shaver point.

Study/Playroom/Fifth Bedroom

8'6" x 8'0" (2.61m x 2.45m)

Perfect for use as a study or potential guest bedroom, there is a window to the side elevation, carpet flooring, central heating radiator, spotlighting and a built in cupboard housing the consumer unit, aerial amplifier and electric meter.

First Floor Landing

Giving access to the bedrooms and bathroom, with carpet flooring, window to the side elevation, built in cupboard with shelving, wall lighting and a hatch to the partially boarded loft space with ladder, light and socket.

Bedroom One

11'10" x 11'3" (3.63m x 3.44m)

A double room created by an extension to the rear and featuring a Juliette balcony with views of the surrounding farmland. With carpet flooring, rear elevation window with a made to measure blind, spotlighting, TV point and a central heating radiator.

En-suite Shower Room

4'0" x 11'10" (1.22m x 3.62m)

Fitted with a contemporary three piece suite comprising a walk in shower cubicle, wash hand basin with storage beneath and wc, with a velux window, central heating radiator, illuminated mirror with bluetooth speakers and shaver point and a window to the rear elevation.

Walk Through Wardrobe Area

8'2" x 7'3" (2.50m x 2.23m)

Upon entry to the main bedroom, you walk through the perfect space for your wardrobes with carpet flooring.

Bedroom Two

11'8" into doorway x 12'11" (3.58m into doorway x 3.96m)

A second double room enjoying the use of a built in wardrobe, with a window overlooking the front garden with a fitted made to measure blind, central heating radiator, carpet flooring and a TV point.

Bedroom Three

11'2" not into robe x 10'0" (3.42m not into robe x 3.05m)

A third double room offering a window to the rear elevation with a made to measure blind, built in wardrobe, carpet flooring, aerial point and a central heating radiator.

Bedroom Four

11'8" x 7'2" (3.58m x 2.19m)

A practical fourth bedroom featuring a built in storage cupboard, carpet flooring, central heating radiator and a window overlooking the front elevation with a fitted made to measure blind.



Family Bathroom

8'2" x 5'8" (2.49m x 1.74m)

Fitted with a contemporary three piece suite comprising a bath, wash hand basin with storage beneath and wc, all with partially tiled walls. There is also a window to the side elevation with fitted blind, spotlighting, central heating radiator and an illuminated wall mounted mirror with shaver point.

Outside

The property occupies a pleasant position within this highly regarded village. Set behind electric gates, to the front is a landscaped driveway providing off road parking for multiple vehicles and giving access to the attached garage. The front garden is enclosed by established hedging and is predominantly laid to lawn with well stocked shrubs. Gated access to the side leads to a larger than normal mainly laid to lawn garden not overlooked from beyond, providing plenty of space for growing families to enjoy. Featuring a patio area adjacent to the accommodation ideal for outdoor entertaining, outside lighting and a timber shed.

Double Garage

20'3" max x 16'9" (6.18m max x 5.11m)

Featuring an electric door to the front, light, power, gas meter, alarmed and built in units providing useful storage.

Tenure & Council Tax

We understand the property to be freehold with vacant possession upon completion. Melton Council - Tax Band C. Please be advised that when a property is sold, local authorities reserve the right to re-calculate the council tax band. Please note improvements have been made to the property which could result in the tax band changing if a relevant transaction takes place. i.e. the property is sold.

Viewing Arrangements

Viewings are strictly by appointment only.

Need Independent Mortgage Advice?

We are pleased to introduce the Mortgage Advice Bureau, who work with Newton Fallowell Estate Agents to provide our customers with expert mortgage advice. They have access to thousands of mortgages, including exclusive deals not available on the high street. Their award-winning advice is tailored to your circumstances, whether you're looking to take your first steps on the property ladder, moving home, or even investing in a buy-to-let property. They can help find the right mortgage for you and support your application every step of the way. To speak with our expert 'in branch' adviser, please contact our office.

Please note that when making an offer, if you are taking out a mortgage, you will also be asked to have a no obligation chat with our 'in branch' mortgage adviser to confirm your affordability. We ask for your cooperation in this matter.





Money Laundering

In line with current money laundering regulations, prospective buyers will be asked to provide us with photo I.D. (e.g. Passport, driving licence, bus pass etc) and proof of address (e.g. Current utility bill, bank statement etc). We ask for your cooperation in this matter as this information will be required before a sale can be agreed.

Agents Note

These particulars, whilst believed to be accurate are set out as a general outline only for guidance and do not constitute any part of an offer or contract. Details are given without any responsibility, and any intending purchasers, lessees or third parties should not rely on them as statements of representation of fact, but must satisfy themselves by inspection or otherwise as to their accuracy. All photographs, measurements, floor plans and distances referred to are given as a guide only and should not be relied upon for the purchase of carpets or any other fixtures or fittings. All services and appliances have not and will not be tested by Newton Fallowell. Lease details, service ground rent (where applicable) are given as a guide only and should be checked and confirmed by your solicitor prior to exchange of contracts. No person in this firm's employment has the authority to make or give any representation or warranty in respect of the property. We retain the copyright in all advertising material used to market this Property.

Referrals

Newton Fallowell and our partners provide a range of services to our vendors and purchasers, although you are free to choose an alternative provider. We can refer you to Mortgage Advice Bureau to help with finances, we may receive a referral fee if you take out a mortgage through them. If you require a solicitor to handle your sale or purchase, we can refer you on to a panel of preferred providers and we will receive a referral fee should you decide to use them to sell or purchase a property. We can also refer you to a surveyor and mortgage adviser and we will receive a referral fee should you use their services. If you require more information regarding our referral programmes, please ask at our office.

Free Property Valuations

If you have a house to sell then we would love to provide you with a free no obligation valuation.

